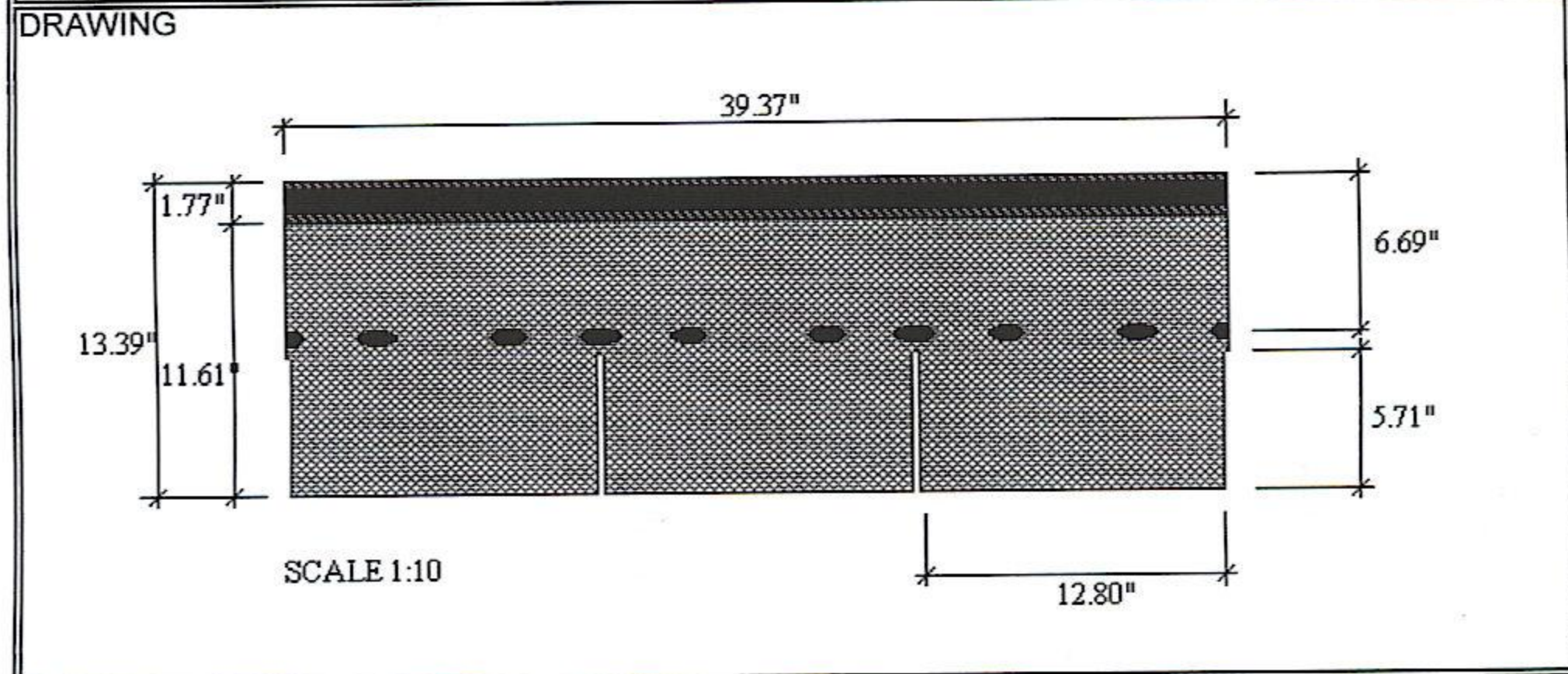


PRESTIGE ELITE COPPER SHINGLES

TEGOLA CANADESE S.p.A Research & Development	<b>TECHNICAL DATA SHEET</b>	'COD:DRS1P123 a rev.3 del 15/07/03
---	-----------------------------	---------------------------------------

NAME: Prestige Elite	CUSTOMER: TEGOLA CANADESE
----------------------	---------------------------



Exposed part protected by a copper sheet

DIMENSIONAL PROPERTIES			
	UM	NOMINAL VALUE	TOLLERANCES
LENGTH	in	39.37"	+/-0.1"
WHIDTH	in	13.39"	+/-0.1"
THICKNESS	in	0.185"	+/-0.02"
EXPOSITION	in	5.7"	-
COPPER THICKNESS	mills	2.75	+/-5%

WEIGHT PROPERTIES				
	UM	NOMINAL VALUE		TOLLERANCES
		SINGLE LAYER	ROOFED	
WEIGHT	Lbs/SQ	-	340	+/-12,5%
WEIGHT MAT	Lbs/SQ	3.25	-	>3
WEIGHT ASPHALT	Lbs/SQ	-	>163	-

CHEMICAL & MECHANICAL PROPERTIES			
	UM	NOMINAL VALUE	NORM
BREAKING STRENGTH LONG.	lbf/in	>170	EN544
BREAKING STRENGTH CROSS DIR.	lbf/in	>170	"
PEELING	lbf/in	>2.82	"

SEALING POINTS:		SELFADHESIVES	
BUNDLESS	WRAPPING	WHITE KRAFT CARDBOARD	
1SQ.= 4,587 BUNDLES	N° of SHINGLES	14	
	USEFULL AREA	0,218 SQ	
PALLETS	N° of BUNDLESS	48	
	COVERED SURFACE	10.46 SQ	
	WEIGHT	1.4<Pallet<1.8 MT	